





# Table of Contents



## **\* Introduction**

### **A Compliance/Non-Compliance**

- A 1.1 Supplier Charge Back
- A 1.2 Compliance Checklist

### **B Master Label**

- B 1.1 Material
- B 1.2 Dimensions
- B 1.3 Specifications
- B 2.1 Drawings
- B 3.1 Alpha-Numeric Text Blocks
- B 3.2 Bar Code Building Blocks
- B 3.3 Shipping Destination Block
- B 4.1 Data Identifier
- B 4.2 Bar Code Symbology
- B 5.1 FDC Standard Box Sizes
- B 5.2 Label Placement
- B 6.1 Master Load Label Placement
- B 7.1 Mixed Load Master Label Placement
- B 7.2 Mixed Load Master Label Requirement

### **C SKU Label (Unit)**

- C 1.1 Material
- C 1.2 Dimensions
- C 1.3 Source
- C 1.4 Small Plain
- C 1.5 Retail Display Label
- C 2.1 SKU Label Placement
- C 2.2 Retail Label and Boxed Merchandise
- C 2.3 Inside Standard FDC Ship Case

### **D Pallet**

- D 1.1 Material
- D 1.2 Dimensions
- D 1.3 Specifications
- D 2.1 Drawings

### **E Standard Franklin Distribution Center (FDC) Box**

- E 1.1 Background
- E 1.2 Dimensions
- E 1.3 Specifications
- E 2.1 Large Ship Case
- E 3.1 Medium Ship Case
- E 4.1 Small Ship Case
- E 5.1 Very Small Ship Case
- E 6.1 Approval Form
- E 6.2 Dimensions
- E 6.3 Specifications

### **F Returns From Dealers**

- F 1.1 Requirements
- F 1.2 Packaging Material Requests
- F 1.3 Ship All Packaging Materials To
- F 1.4 Billing/Invoices

### **G Resource Assistance**

- G 1.1 Barcode Scanning
- G 1.1 Barcode Verification
- G 1.1 Buyer/Planner
- G 1.1 CPQ/CCFG
- G 1.1 Pallet Loading Configuration
- G 1.1 Receiving
- G 1.1 Unified Solutions Incorporated
- G 1.1 Unisource
- G 1.1 Master Label Verification Mailing Address

### **H Supplier Information**

- H 1.1 Instruction Sheets
- H 1.1 Label-Sku
- H 1.1 Label-Master Labels
- H 1.1 Label Material
- H 1.1 Pallet
- H 1.1 Printer Ribbon
- H 1.1 Ship Case – Box
- H 1.1 Ship Case – Bulk Container
- H 1.2 Distribution Center

### **I Supplier Non-Compliance Codes**

- I 1.1 Master Label Codes
- I 1.2 Mixed Label Codes
- I 1.3 SKU Label Codes
- I 1.4 Pallet Codes
- I 2.1 Case Codes
- I 2.2 Miscellaneous Codes



# Introduction



To Our Supplier,

Harley-Davidson Packaging services has assembled the enclosed packaging guidelines in an effort to help you better understand and comply with our packaging requirements. Based on suggestions from our stakeholders we feel we have created a more “user friendly” guide to better serve you. This guide is easier to use and helpful in locating the information you need to meet the necessary requirements.

Information contained within this document will provide you with detailed packaging and labeling instructions for shipping to *Harley-Davidson Parts and Accessories Distribution Center or Contract Packaging Facility only*. This information is NOT to be used for shipping to any Harley-Davidson or Buell assembly or production facility.

Packaging and shipping instructions need to be followed exactly in order for our operations to be efficient and effective. Product received incorrectly packaged or labeled will result in costly delays, additional labor, reduction of efficiencies and possible supplier charge back.

If you are aware of any potential obstacle in meeting these requirements please contact the appropriate Resource Assistance found in the table of contents of these guidelines. Your Buyer/Planner and Packaging Services are just two of the resources available to work with you to meet these requirements.



# Compliance/Non Compliance

# A

## Supplier Charge Back

Compliance with Harley-Davidson Packaging Requirements and Shipping Standards is *required of all suppliers* sending product to the Harley-Davidson Distribution Center or Contract Packaging Facility. This includes, but is not limited to suppliers, contract packaging organizations and Harley-Davidson/Buell production facilities.

Suppliers shipping packaged product *not* in compliance with the information set forth in this document and not having prior written approval from Harley-Davidson **will be subject to charge back or shipment may be returned freight collect.**

A 1 .1

## Compliance Checklist

- Read and understood Packaging Requirements Manual
- Used Resource Assistance to answer questions
- Received CPQ/CCFG quantities from Buyer/Planner

A 1 .2

### Materials

#### Standard Franklin Distribution Center Ship Case-Boxes

- Correct size-V,S,M,L?
- Quantity?
- Order Date

#### Sku Labels

- Correct Information?
- Quantity?
- Order Date
- Format/scan approval?  
(required if not requested from Harley-Davidson)

#### Pallets

- Correct size?
- Correct construction?
- Quantity?
- Order Date

#### Standard Franklin Distribution Center Ship Case Labels

- Correct information?
- Complete information?
- Order Date
- Format/scan approval?  
(required if not requested from Harley-Davidson)

#### Master Pallet

- Quantity?
- Order Date

### Shipping Procedure

#### Standard Franklin Distribution Center Product/Ship Case-Box

- Product packaged correctly?
- Product labeled correctly?
- Correct number of individual items per Ship Case-Box?
- Ship Case-Box equal to/or less than 50 lbs. Maximum weight?
- Ship Case-Box sealed correctly?
- Ship Case-Box stacked on pallet correctly?
- Ship case-box secured on pallet correctly?
- Palletized packages labeled with Master load label?
- Palletized packages labeled with Mixed load label?
- Palletized packages with Pallet label?
- Pallet weighs less than 1800 lbs. and greater than 250 lbs.?
- Are your CPQ/CCFG/PCFG the same as the last time you shipped?



# Master Label

B

## Materials

Paper pressure sensitive label stock or printed on paper sheet and secured with 2” pressure sensitive poly tape.

B 1 .1

## Dimensions

Six inches wide and variable in length based on information required. Harley-Davidson suggests using a common 6” x 4” label stock size which is an “off the shelf” product.

B 1 .2

## Specifications

### Format

Information from internal Harley-Davidson sources and Automotive Industry Action Group (AIAG) standards, specifically the B-10 Trading Partner Label Guidelines.

B 1 .3

### **A copy of this can be ordered for a nominal fee from:**

Customer Service  
Automotive Industry Action Group  
26200 Lahser Road Suite 200  
Southfield, Michigan 48034-7100  
Tel (248) 358-3003  
Fax (248) 799-7993  
Email order : [order\\_inquiry@aiag.org](mailto:order_inquiry@aiag.org)



# Master Label

# B

## Drawings

**B 2 .1**

### Ship From

Supplier's ship from address and H-D assigned supplier ID

*Block Title:* FROM:

*Max Length:* 4 lines of text, (10 or 8 pts or 6 or 7 LPB).  
Width of block no longer than 1.75 inches.

### Ship To/Dock/Internal Delivery Location

The H-D address receiving container.

*Block Title:* TO:

*Max Length:* Address: 4 lines of text, (12 pts or 5 LBP) . DOC and DEL LOC titles 12 pts. DOC and DEL LOC data not used in P&A; leave blank.

### Part Number

H-D assigned part number

*Block Title:* PART NO. (P)

*Symbology:* Code 128, see B 4.2 for details

*Data Identifier (DI):* P

*Max Length:* 19 : Max Data Chars: 18 DI Chars: 1






### Part Revision / Description

The part's revision level and description

*Titles:* REV. LEVEL and PART DESC:

*Max Length for Titles:* 1 line of text same size as block titles

*Max Length:* 3 lines of text (16 pts or 3 LPB)

FROM: ABC COMPANY 123 NUMBER LANE ALPHABET, YZ 90785-4321 SUPPLIER# A0000		TO: HARLEY-DAVIDSON DISTR. CENTER 10000 SOUTH FRANKLIN DRIVE FRANKLIN, WI 53132 DOCK:      DEL LOC:		<h1>MASTER LABEL</h1>
PART NO. (P) <b>91654-01</b> 		REV. LEVEL <b>C</b> PART DESC: <b>RT RISER</b>		
QUANTITY (Q) <b>50000</b> 		 PURCHASE ORDER # (K) <b>P-0000009876</b>		
SERIAL NO. (9S) <b>99999000</b> 		 PACKING LIST # (11K) <b>12345678</b>		

### Quantity

The amount of parts being shipped.

*Block Title:* QUANTITY (Q)

*Symbology:* Code 128, see B 4.2 for details

*Data Identifier (DI):* Q

*Max Length:* 6: Max Data Chars: 5 DI Chars: 1

### Purchase Order Number

H-D purchase order number

*Block Title:* PURCHASE ORDER # (K)

*Symbology:* Code 128, see B 4.2 for details

*Data Identifier (DI):* K

*Max Length:* 16: Max Data Chars: 15 DI Chars: 1

### Serial Number

Supplier generated serial number for PALLET.

*Block Title:* SERIAL NO. (9S)

*Symbology:* Code 128, see B 4.2 for details

*Data Identifier (DI):* 9S

*Max Length:* 10: Max Data Chars: 8 ; DI Chars: 2

### Packing List Number

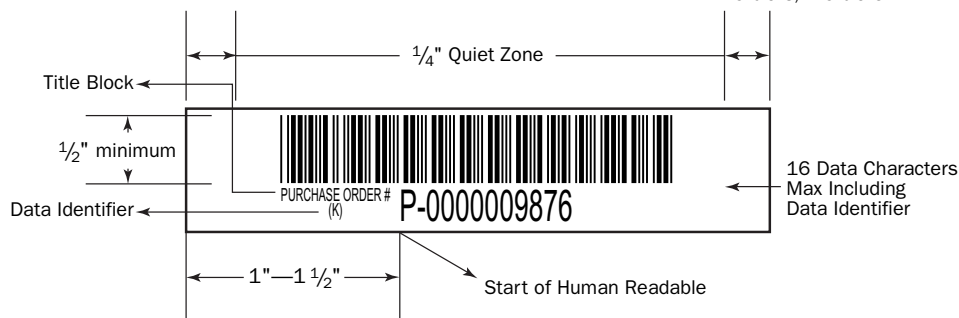
Supplier generated packing list number, which may be the same as ASN number (if not, must be pack list number)

*Block Title:* PACKING LIST # (11K)

*Symbology:* Code 128, see B 4.2 for details

*Data Identifier (DI):* 11K

*Max Length:* 11: Max Data Chars: 8; DI Chars: 3





# Master Label

# B

## Alpha-Numeric Text Blocks

All text within any given block will contain text characters defined by using a unit of measure called Lines-Per-Block (LPB).

This will enable the operator to determine the actual height and font of text for a given LPB or range, as it may be different with each printer or label making software selected.

**B 3 .1**

## Bar Code Building Blocks

- This building block contains no more than one bar code.
- Data characters per block for a bar code shall *not* exceed 19.
- Bar code symbol shall be placed in the *lower* portion of the block and *left* justified.

**B 3 .2**

Lines per Block	Max Characters per Line	Point	Inches	MM
1	8	64	0.9	22
2	18	32	0.4	11
3	28	20	0.25	7
4	34	16	0.2	5
5	42	12	0.15	4
6	48	10	0.12	3
7	59	8	0.1	2
8	68	6	0.08	1.5

## Shipping Destination Block

To: Harley-Davidson Distribution Center  
10000 South Franklin Drive  
Franklin, Wisconsin 53132

To: (Other destination as specified  
by your PO)

**B 3 .3**



# Master Label

# B

## Data Identifier

Characters encoded in the bar code as a constant preceding the variable information in each building block. The Data Identifier is *not* part of the human readable text printed

above the bar code. *The bar code must be encoded with the specific character as shown on the example.*

**B 4 .1**

## Bar Code Symbology

Harley-Davidson encourages you to send a sample master label to the address listed in (G 1.1 *Resource Assistance – Buyer/Planner*) for scan and format approval to avoid charge backs.

If you do not have a label printer or are unable to print labels yourself. (see H 1.1 *Suppliers Information Master Labels.*)

**B 4 .2**

### **Code 128 Specifications for Container and Master Labels:**

Industry Standard is the Automotive Industry Action Group (AIAG)

Use Code 128 Subset C for numeric characters

Use Code 128 Subset A for alpha characters and ASCII symbols

“X” Dimension shall be in the range of 0.33 MM (0.013 inch) to 0.43 MM (0.017 inch)

Bar code height shall be a minimum of 13 MM (0.5 inch)

Quiet zone (blank space at each end of bar code) shall be a minimum of 6.3 MM (0.25 inch)

Bar code shall meet a minimum ANSI print quality grade of “C”

Human readable data must be 0.25 inches or 20 points or 3 LPB

Row/Block height must be 1 inch tall

*For certification purposes only*, enter the maximum number of characters per block to ensure block size is large enough.

Production B-10 labels (labels that are sent on inbound shipments to the plant) must accurately match the data from EDI or the purchase order. **DO NOT ENTER** additional characters (i.e. 0) to fill the block.

### **Label Drawing**

(see B 2.1 *Master Label – Drawings*)

### **Placement**

(See B 6 — B 7 *Master Label – Label Placement*)





# Master Label

# B

## Franklin Distribution Center Standard Box Sizes

### Large Box

Place label on bottom of width (end) panel centered left to right in locator brackets printed on box.

### Medium Box

Place label on bottom of width (end) panel centered left to right in locator brackets printed on box.

### Small Box

Place label on bottom of width (end) panel centered left to right (wrapping label around edges of box) in locator brackets printed on box.

### Very Small Box

Place label on bottom of width (end) panel centered left to right (wrapping label around edges of box) in locator bracket printed on box.

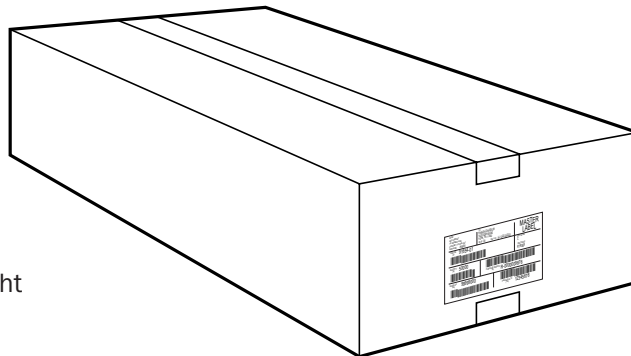
**B 5 .1**

## Label Placement

**B 5 .2**

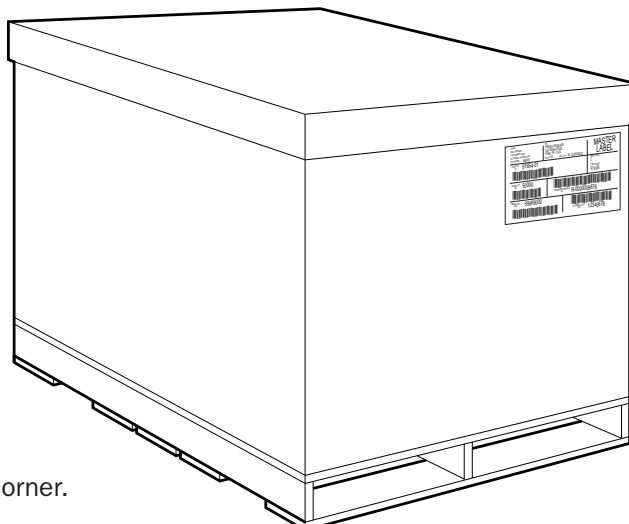
### Ship Case Box

Center left to right on bottom.



### Ship Case Bulk Container

Upper right hand corner.



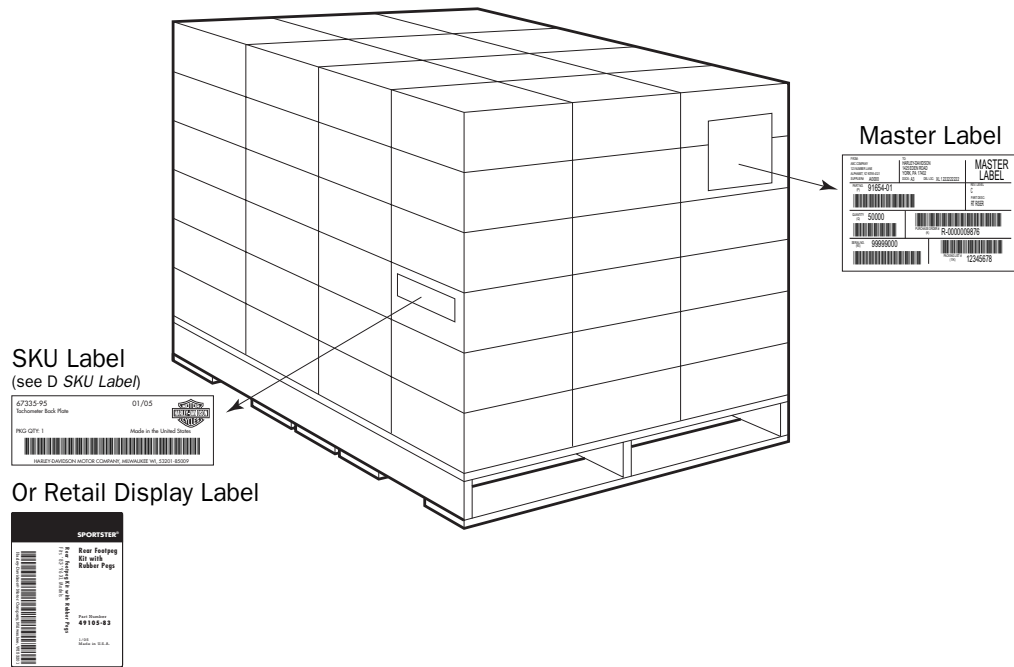


# Master Label

# B

## Master Load Label Placement

### B 6 .1



**Master Label**  
Top right corner of shipment.

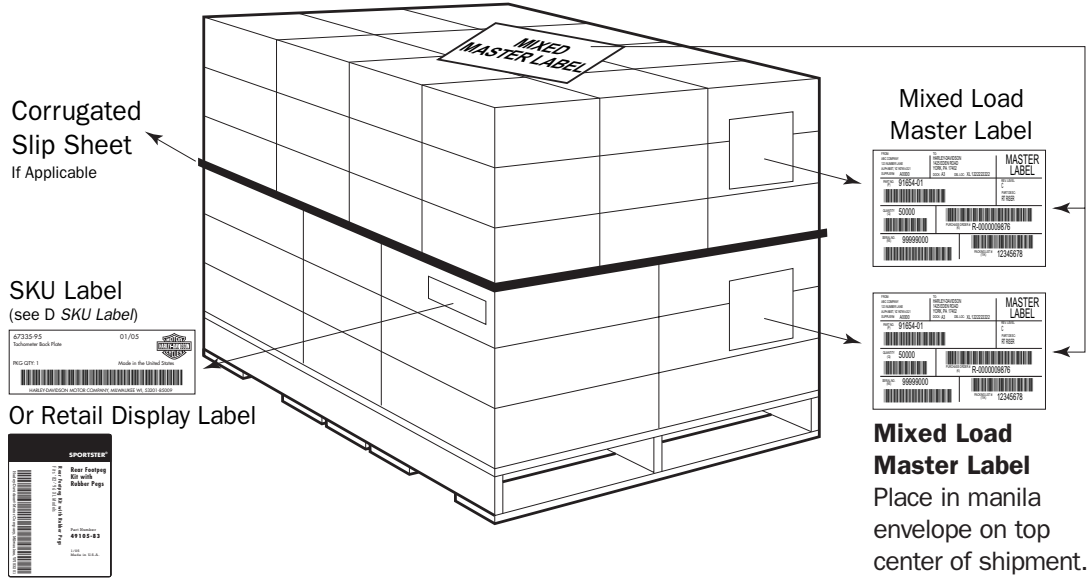


# Mixed Load Master Label

B

## Mixed Load Master Label Placement

B 7 .1



## Mixed Load Master Label Requirement

B 7 .2

Mixed Skid?	More than one box of Part # on skid?	Multiple Purchase Order #?	Multiple Packing List #?	Mixed Master Label Requirement
Yes	No	N/A	N/A	Use one Mixed Master label that equals quantity of the box. Continue to next part on the pallet.
Yes	Yes	No	No	Use one Mixed Master label that equals quantity of all of the boxes. Continue to next part on the pallet.
Yes	Yes	No	Yes	Use a Mixed Master for each of the packing list numbers used for the part #. Quantity on the labels should reflect the quantity for each packing list appropriately. Continue to next part on the pallet.
Yes	Yes	Yes	No	Use a Mixed Master for each of the purchase order numbers used for the part #. Quantity on the labels should reflect the quantity for each purchase order appropriately. Continue to next part on the pallet.
Yes	Yes	Yes	Yes	Use a Mixed Master for each unique packing list/purchase order combination used for the part #. Quantity on the labels should reflect the quantity for each combination appropriately. Continue to next part on the pallet.



# SKU Label

C

## Materials

Pressure sensitive paper label stock die cut on rolls or on sheets

C 1 .1

## Dimensions

**Small Plain - SP**  
4" x 1 7/8"

**Retail Display Label - LD**  
2 7/8" x 4"

C 1 .2

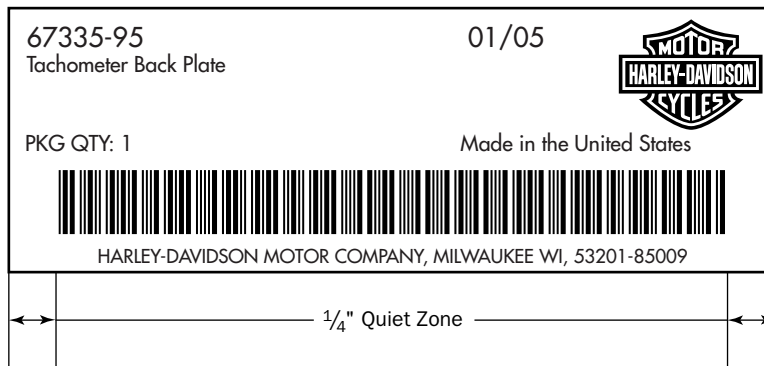
## Source

Harley-Davidson will provide labels to all suppliers free of charge.  
(see H 1.1 Supplier Information – Label SKU.)

C 1 .3

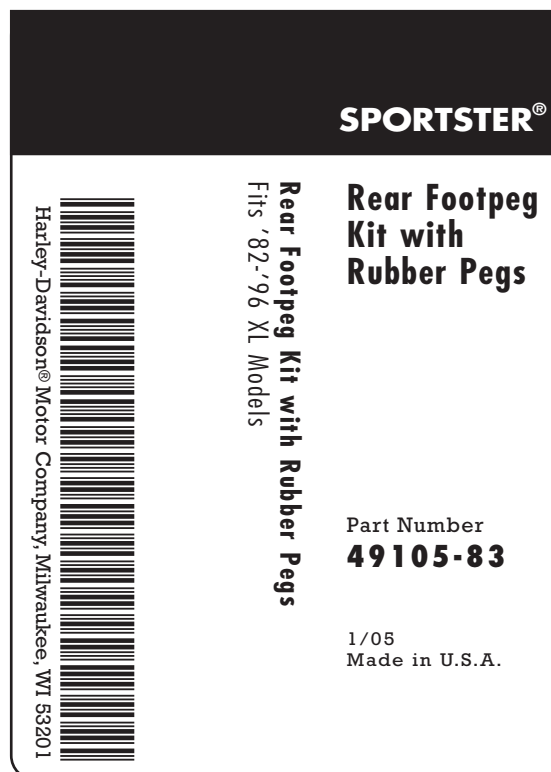
## Small Plain

C 1 .4



## Retail Display Label

C 1 .5





# SKU Label

C

## SKU Label Placement

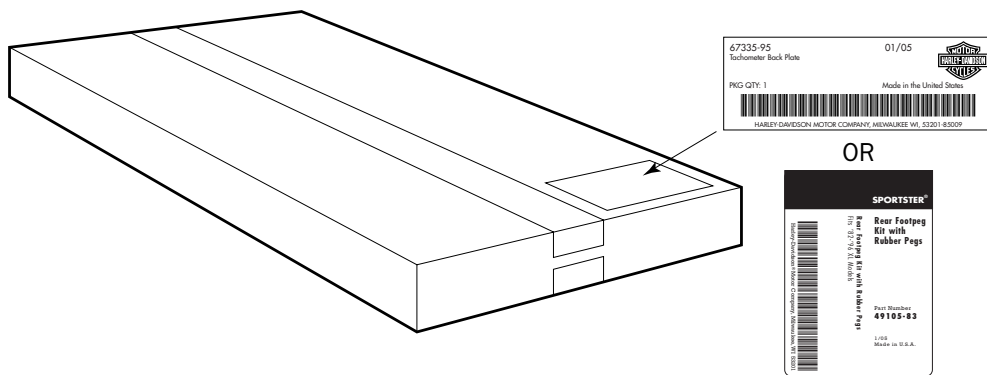
Label placement on packages should not cover pertinent information of instructions.

C 2 .1

## Retail Label and Boxed Merchandise

Place label on end panel or lower right hand corner on top panel if end panel is not large enough.

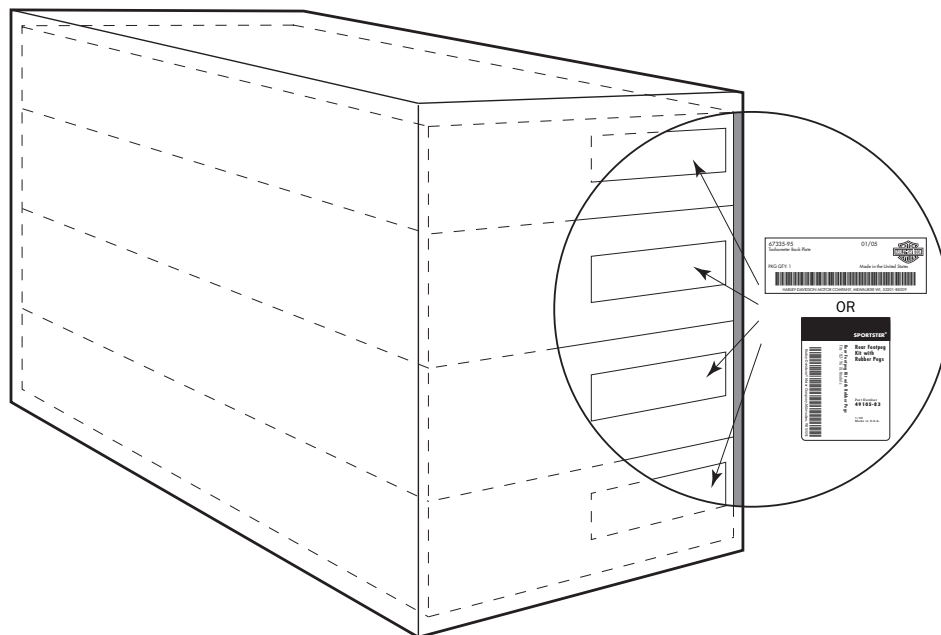
C 2 .2



## Inside Standard FDC Ship Case

Face labeled packages toward the end panel that is labeled, if possible. Place cushioning opposite end of labeled boxes.

C 2 .3





# Pallet

# D

## Materials

Wood, metal and plastics meeting the criteria stated in this document are acceptable.  
Corrugated disposable are *not* acceptable.

D 1 .1

## Dimensions

48" X 45" (+ or -  $\frac{1}{8}$ " in length or width maximum). *Main entry on 45" side.*

D 1 .2

## Specifications

### Type

Two-way: Openings accepting handling equipment in two ends.

(Optional) Partial Four-way (Notched stringer style): Openings at both ends and side openings with limited accessibility to handling equipment.

### Style

Only flush (no winged) reversible or non-reversible stringer pallets are allowed. Nine block style pallets are *not accepted*.

### Construction

As defined by:  
National Wooden Pallet/Container Association  
1800 North Kent Street Suite 911  
Arlington, VA 22209-2104  
(703) 527-7667  
www.nwpc.com

### Load Weight

Minimum: 250 lbs.  
Maximum: 1800 lbs.  
(For less than 250 lbs., contact your Buyer/Planner)

### Load Height

Low load: equal to or greater than 24" and equal to or less than 48" high.  
High load: equal to or taller than 60" and equal to or less than 72" high.

Note: Loads less than 2", see buyer/planner for authorization.

### Pallet Loading

Large boxes should be column stacked for strength. Small boxes should be interlock stacked for stability. Pallet loading configuration software is available for Anyone needing assistance. (See G 1.1 Resource Assistance — Pallet Loading Configuration.)

### Surface Utilization

*No overhang of boxes is allowed.*  
Underhang is only allowed as long as 90% of the Surface is utilized.

### Load Securement

Use stretch wrap or shrink wrap.  
**Nonmetallic (plastic) strapping can be used with written approval PRIOR to shipment.**  
All packages must be secured and load must be prevented from shifting during transit. **Metal strapping/banding is not acceptable.**

### Nails

#7 Drive screw nail with thickness of .099" to .113". 3 nails per 6" joint and 2 nails per 4" joint

### Load Identification

(See B Master Label.)

### Pallet Supplier

(See H 1.1 Supplier Information – Pallet.)

D 1 .3

### Note:

*Pallet heights greater than 48" and less than 60" or exceeding 72" will not be accepted.*



# Pallet

# D

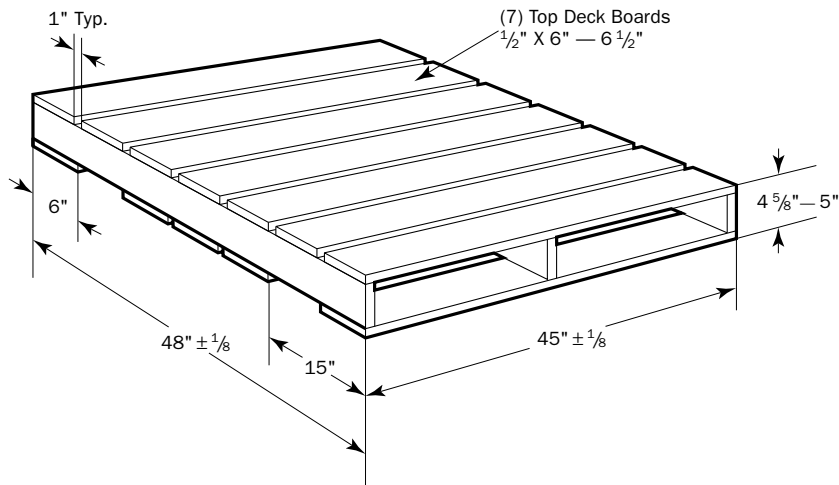
## Drawings

**D 2 .1**

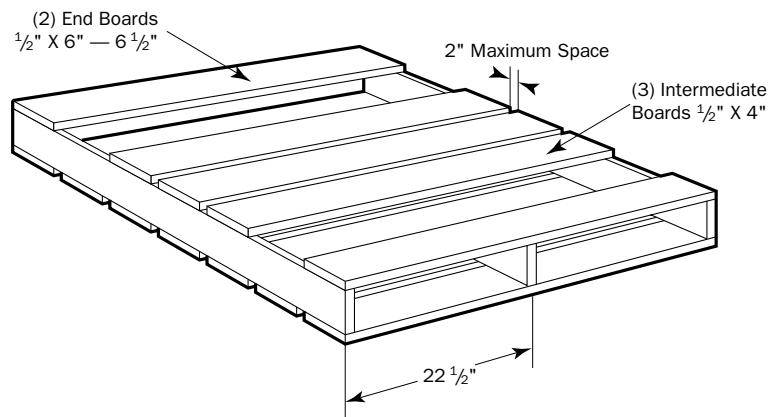
**Note:**

*This pallet may be handled by a fork lift truck or pallet jack on the 45" side.*

*Maximum 2" space between bottom intermediate boards.*



**Top Deck**



**Bottom Deck**



# Standard Franklin Distribution Center (FDC) Box

# E

## Background

Standard size ship case boxes are used to improve productivity, inventory accuracy and also provide consistency among suppliers. Product shipped to the Harley-Davidson Distribution Center packaged so that it does not require any additional packaging or pre-packaging is a strong candidate for one of the standard ship case containers.

The standard ship case box sizes are specifically designed to fit the storage racks and pick-to-light areas within the Distribution Center. Contact the products Harley-Davidson Buyer/Planner for further explanation.

E 1 .1

## Dimensions

### Large -PKG000849

22 <sup>15</sup>/<sub>16</sub>" x 18" x 10"  
Inside Dimension

### Medium -PKG000848

18" x 11" x 10"  
Inside Dimension

### Small -PKG000847

18" x 5 <sup>3</sup>/<sub>8</sub>" x 10"  
Inside Dimension

### Very Small -PKG000846

18" x 5 <sup>3</sup>/<sub>8</sub>" x 5"  
Inside Dimension

E 1 .2

## Specifications

### Style

Regular Slotted Container (RSC)  
International Box Code 0201  
Manufacturer's joint shall be glued and not stitched or taped.

### Material

275 Mullen Burst strength and "C" flute material for large, medium, small and very small boxes.

### Weight Restriction

40 pounds *Maximum* (including product, box, and packaging materials regardless of size).

### Void Fill - Acceptable Materials

Clean wadded kraft paper or bubble wrap are acceptable void fill materials.

### Void Fill - UNACCEPTABLE MATERIALS

The use of expanded foam "peanuts", shredded or wadded newspaper or computer paper, excelsior or popcorn are *not* acceptable void fill materials.

### Construction

Must conform to standards as defined by:  
Fibre Box Association  
2850 Golf Road  
Rolling Meadows, IL 60008  
Tel (708) 364-9600  
Fax (708) 364-9639  
[www.fibrebox.org](http://www.fibrebox.org)

### CPQ/CCFG

Container Pack Quantity: The total number of units per ship case box.

Case Configuration (also called PCFG — Pallet Configuration): The total number of units per pallet.

### Closure - Acceptable Methods

2" – 3" fiber reinforced paper tape or 2" – 3" poly tape is acceptable.

### Closure - UNACCEPTABLE MATERIALS

Staples, twine, metal or plastic banding are *not* acceptable closure methods.

E 1 .3

### Note:

*The quantity determined must be followed for all packaged product for every shipment. This only applies to products that you perform retail packaging to.*





# Standard Franklin Distribution Center Box

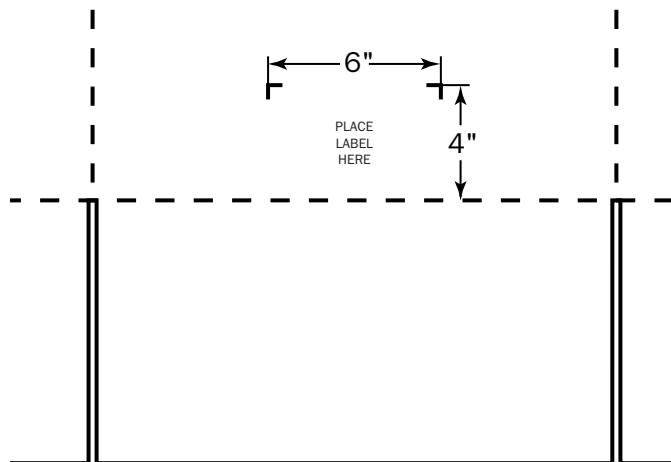
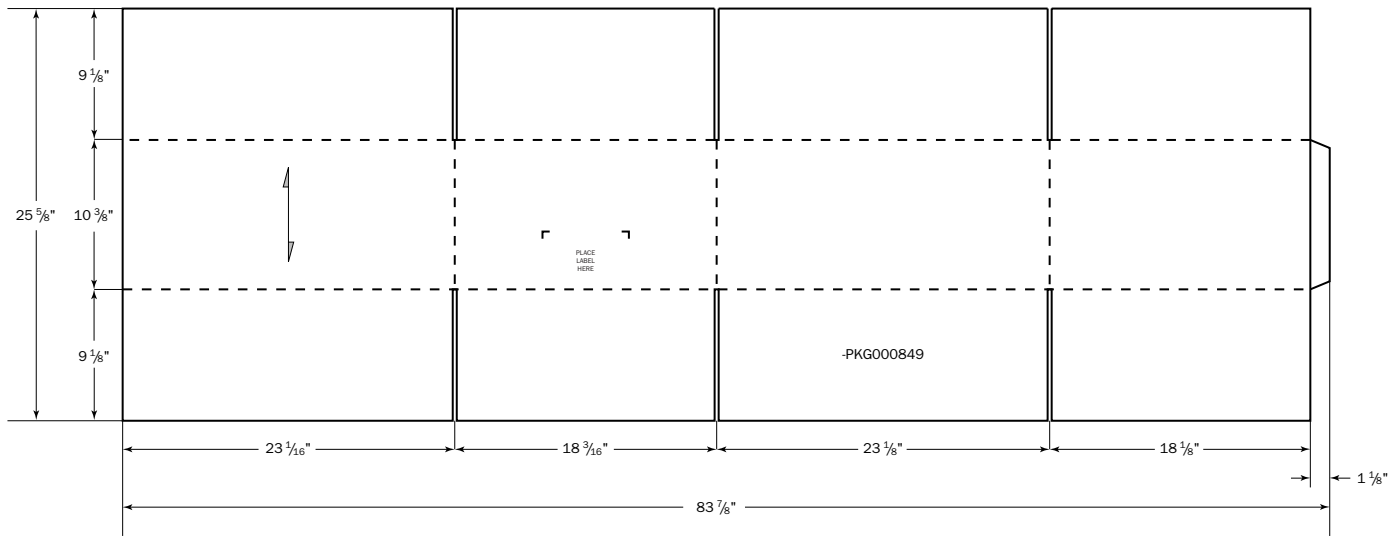
E

## Large Ship Case -PKG000849

### Notes:

1. Material: corrugated, 275 Mullen Burst, C flute.
2. Inside glue joint.
3. Print color: black.
4. 1/2" Block Letters, centered in space.
5. Printed line.
6. 1" block letters, centered on panel.

E 2 .1



Detail A



# Standard Franklin Distribution Center Box

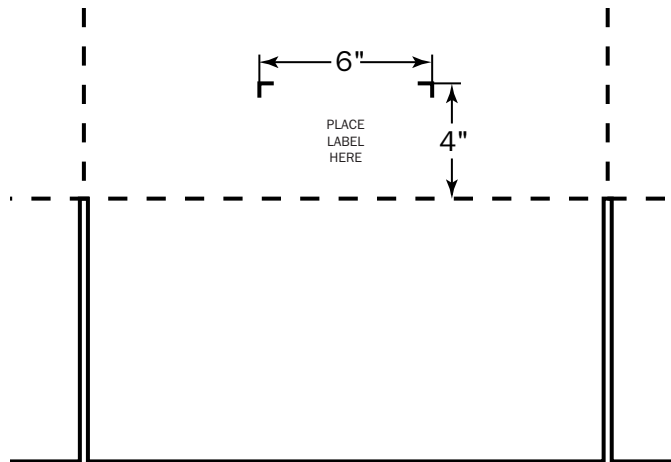
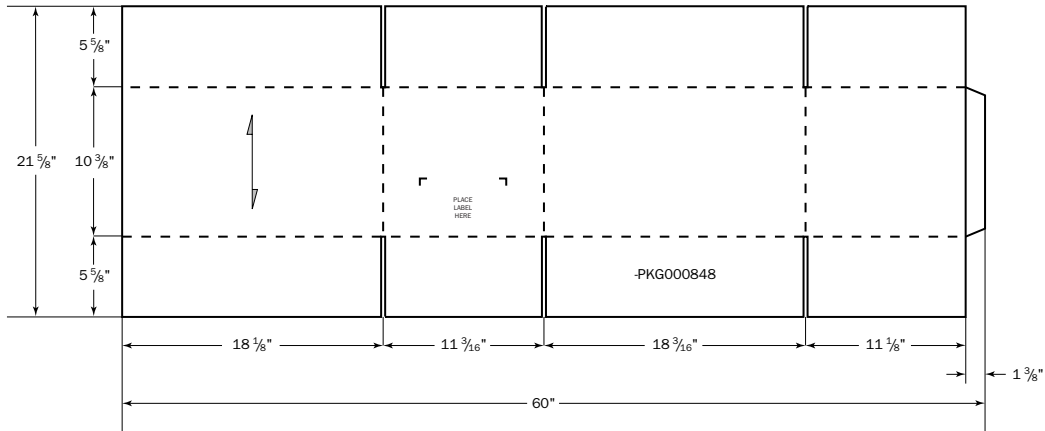
E

## Medium Ship Case -PKG000848

### Notes:

1. Material: corrugated, 275 Mullen Burst, C flute.
2. Inside glue joint.
3. Print color: black.
4. 1/2" Block Letters, centered in space.
5. Printed line.
6. 1" block letters, centered on panel.

E 3 .1



Detail A



# Standard Franklin Distribution Center Box

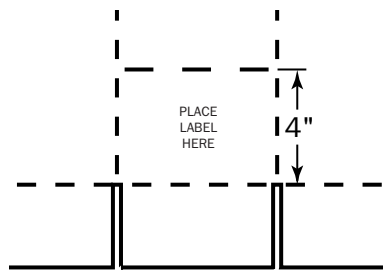
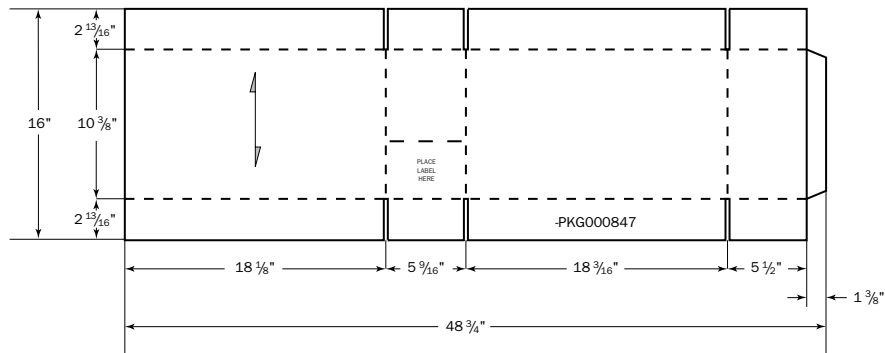
E

## Small Ship Case -PKG000847

### Notes:

1. Material: corrugated, 275 Mullen Burst, C flute.
2. Inside glue joint.
3. Print color: black.
4.  $\frac{1}{2}$ " Block Letters, centered in space.
5. Printed dashed line 5" long, 4" from score.
6. 1" block letters, centered on panel.

E 4 .1



Detail A



# Standard Franklin Distribution Center Box

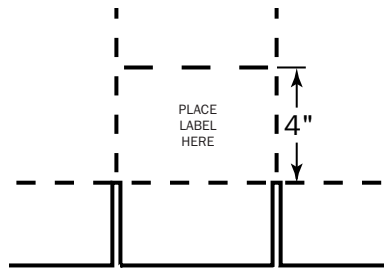
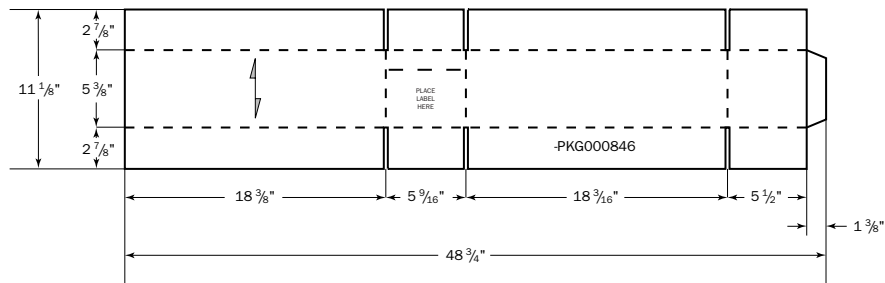
E

## Very Small Ship Case -PKG000846

E 5 .1

**Notes:**

1. Material: corrugated, 275 Mullen Burst, C flute.
2. Inside glue joint.
3. Print color: black.
4. 1/2" Block Letters, centered in space.
5. Printed dashed line 5" long, 4" from score.
6. 1" block letters, centered on panel.



Detail A



# Standard Franklin Distribution Center Box

# E

## Approval Form

Use of bulk containers must be approved prior to shipment to the Distribution Center.

**E 6 .1**

## Dimensions

Cannot exceed 48" x 45" x 24" including pallet height.

**E 6 .2**

## Specifications

### Style

Tube with top and bottom covers or a half-slotted box with cover

### Material

Tube: 350 minimum Mullen Burst strength corrugated double wall (C/B) material.

Cover: Impact resistant polymer plastic OR corrugated single wall corrugated material with 275 minimum Mullen Burst strength.

Cannot exceed 48" x 45" x 24" including pallet height.

### Weight Restriction

Maximum: 1800 lbs.

Minimum: 250 lbs.

### Closure

Built-in locking feature or plastic banding.

### Construction

Must conform to standards as defined by:

Fibre Box Association

2850 Golf Road

Rolling Meadows, IL 60008

Tel (708) 364-9600

Fax (708) 364-9639

[www.fibrebox.org](http://www.fibrebox.org)

**E 6 .3**

### Void Fill

(See E 1.3 Standard FDC Box – Specifications).

### Label Identification

(See B 2.1 Master Label – Drawings).

### Label Placement

(See B 6.1 Master Label – Placement).

### Notes:

*Once a bulk container is selected for a given part number, all future shipments must be made in the same size bulk container.*

*Only one part number per bulk container. All parts must be shipped in an approved bulk container.*

*It is the responsibility of the supplier to provide each bulk container shipped in a damage free usable condition, upon receipt to the Distribution Center.*



# Returns from Dealers

F

## Requirements

Harley-Davidson may require you to provide packaging materials for returned products, called dealer returns or return goods from Harley-Davidson dealerships.

Packaging materials include all materials necessary to repackage a product to its original packaged condition, i.e. corrugated boxes, inserts, sleeves, poly bags, etc..

F 1 .1

## Packaging Material Requests

All requests for packaging materials will be made for Return Goods department by

Packaging Engineering through the Buyer/Planner group.

F 1 .2

## Ship All Packaging Materials To:

Attn: Dealer Return Goods Department  
Harley-Davidson Distribution Center  
10000 South Franklin Drive  
Franklin, WI 53132

F 1 .3

## Billing/Invoices

All billing and invoices should be handled through your Buyer/Planner.

F 1 .4



# Resource Assistance

# G

<b>Barcode Scanning</b>	Buyer/Planner	(414) 342-4680
<b>Barcode Verification</b>	Buyer/Planner	(414) 342-4680
<b>Buyer/Planner</b>	Buyer/Planner	(414) 342-4680
<b>CPQ/CCFG</b>	Buyer/Planner	(414) 342-4680
<b>Pallet Loading Configuration</b>	Buyer/Planner	(414) 342-4680
<b>Receiving</b>	Distribution Center	(414) 423-2608
<b>Unified Solutions Incorporated</b>	Contract Packager	(262) 947-7280
<b>Unisource</b> (Harley on-site reps)	Anne Ward anne.ward@harley-davidson.com	(414) 343-7883

**G 1 .1****Master Label Verification****Mailing Address**

Attn: Ed Zoelle  
Harley-Davidson Distribution Center  
10000 South Franklin Drive  
Franklin, WI 53132



# Supplier Information



Material	Name & Address	Contact
<b>Instruction Sheets</b>	<b>Coakley-Tech</b> 4000 West Burnham St. Milwaukee, Wisconsin 53215	<b>Shadell Sapp</b> Tel (414) 389-1900 Fax (414) 389-9130
<b>Label — Sku</b>	<b>Unified Solutions Incorporated</b> 9801-80th Avenue Pleasant Prairie, Wisconsin 53158	<b>Jim Lipowski</b> Tel (262) 947-7280 Fax (262) 947-7283 <a href="http://www.usipackaging.com/hclabelprod/">www.usipackaging.com/hclabelprod/</a>
<b>Label - Master Labels</b>	<b>Barcode Solutions</b>	<a href="http://www.bcswebprint.com">www.bcswebprint.com</a>
<b>Label Material</b>	<b>Unisource</b> (Harley on-site rep)	<b>Anne Ward</b> Tel (414) 343-7883 <a href="mailto:anne.ward@harley-davidson.com">anne.ward@harley-davidson.com</a>
<b>Pallet</b>	<b>Unisource</b> (Harley on-site rep)	<b>Anne Ward</b> Tel (414) 343-7883 <a href="mailto:anne.ward@harley-davidson.com">anne.ward@harley-davidson.com</a>
<b>Printer Ribbon</b>	<b>Unisource</b> (Harley on-site rep)	<b>Anne Ward</b> Tel (414) 343-7883 <a href="mailto:anne.ward@harley-davidson.com">anne.ward@harley-davidson.com</a>
<b>Ship Case — Box —Bulk Container</b>	<b>Unisource</b> (Harley on-site rep)	<b>Anne Ward</b> Tel (414) 343-7883 <a href="mailto:anne.ward@harley-davidson.com">anne.ward@harley-davidson.com</a>



**Note:**  
*Suppliers and prices  
subject to change  
without notice from  
Harley-Davidson.*

## Distribution Center

Harley-Davidson Distribution Center  
10000 South Franklin Drive  
Franklin, Wisconsin 53132







# Supplier Non-Compliance Codes

I

## Master Label Codes

N45 NC Mast Lab: Label Placement  
N46 NC Mast Lab: Missing Label  
N47 NC Mast Lab: Unmatched Content

### Purchase Order Field

N48 NC Mast Lab: Data ID Missing  
N49 NC Mast Lab: GT 12 Char.  
N50 NC Mast Lab: LT 12 Char.  
N51 NC Mast Lab: PO Prefix Missing  
N52 NC Mast Lab: Incorrect PO Prfx  
N53 NC Mast Lab: Unable to Scan  
N54 NC Mast Lab: PO Missing

### Serial Field

N55 NC Mast Lab: Data ID Missing  
N56 NC Mast Lab: Unable to Scan  
N57 NC Mast Lab: Serial Missing  
N58 NC Mast Lab: GT 8 Char.

### Part Number Field

N59 NC Mast Lab: Data ID Missing  
N60 NC Mast Lab: Doesn't Match Load  
N61 NC Mast Lab: Invlid H-D Part No  
N62 NC Mast Lab: Unable to Scan  
N63 NC Mast Lab: Part Num. Missing

### Quantity Field

N64 NC Mast Lab: Data ID Missing  
N65 NC Mast Lab: Gt than 5 Char.  
N66 NC Mast Lab: Leading Char.  
N67 NC Mast Lab: Doesn't Match Load  
N68 NC Mast Lab: Unable to Scan  
N69 NC Mast Lab: Qty Missing

I 1 .1

## Mixed Label Codes

N70 NC Mix Lab: Missing Label

I 1 .2

## SKU Label Codes

N71 NC Sku Lab: Missing Label  
N72 NC Sku Lab: Doesn't Match Cntnt

I 1 .3

## Pallet Codes

N73 NC Pallet: Dim. are Not (48x45)  
N74 NC Pallet: Materials  
N75 NC Pallet: Broken Pallet  
N76 NC Pallet: Style (No Wing)  
N77 NC Pallet: Construction (Gaps)  
N78 NC Pallet: Load Weight (1,800)

N79 NC Pallet: Load Weight (Under)  
N80 NC Pallet: Load Weight (Over)  
N81 NC Pallet: Surface Util (90%)  
N82 NC Pallet: Pallet Loading  
N83 NC Pallet: Metal Banding  
N84 NC Pallet: Insuf. Load Secure

I 1 .4



# Supplier Non-Compliance Codes

I

## Case Codes

### Part Type 5 Only

N85 NC NC Case: Incorrect CPQ  
N86 NC NC Case: Incorrect CCFG  
N87 NC NC Case: Incorrect Dimensions  
N88 NC NC Case: Incorrect Container  
N89 NC NC Case: Contnr Not Fit For Use

### All Part Types

N90 NC NC Case: Weight (45 lbs.)  
N91 NC NC Case: Incorrect Closures  
N92 NC NC Case: Unapproved Void Fill  
N93 NC NC Case: Insufficient Void Fill  
N94 NC NC Case: Multiple Parts

I 2 .1

## Miscellaneous Codes

N96 NC Misc: PO-Part Num. Mismatch  
N96 NC Misc: Packlist-Load Mismatch  
N97 NC Misc: Pckl & Ld QTY Mismatch  
N98 NC Misc: Packlist Missing

I 2 .2